



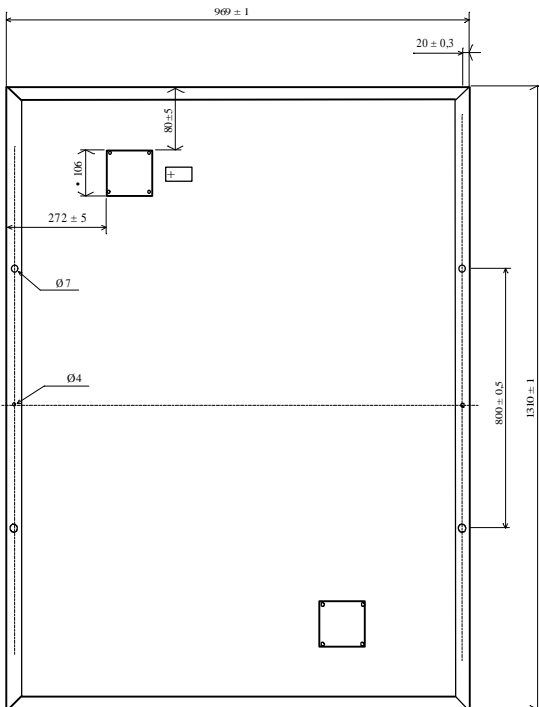
I-150

Photovoltaic module

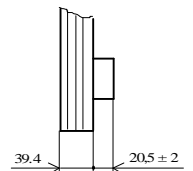
CHARACTERISTICS

PHYSICAL	
Length	1310 mm
Width	969 mm
Thickness	39,4 mm
Weight	17 kg
Number of cells in series	36
Number of cells in parallel	3
NOCT (800 W/m ² , 20 °C, AM 1.5, 1m/s)	47 °C
ELECTRICAL (1000 W/m ² , 25 °C cell, AM 1.5)	
Nominal voltage (V _n)	12 V
Maximum power (P _{max})	150 W _P ± 10 %
Short-circuit current (I _{sc})	9,81 A
Open circuit voltage (V _{oc})	21,6 V
Maximum power current (I _{max})	8,61 A
Maximum power voltage (V _{max})	17,4 V
CONSTRUCTIVE	
Cells	Single-crystal Si, textured and antireflectivity layered
Contacts	Redundant contacts on each cell for circuit reliability
Laminate	EVA (ethylene vinyl acetate)
Front face	Tempered glass with improved light transmission
Back face	Tough multi-layered backsheet Tedlar
Frame	Anodised aluminium
Connection boxes	2 x IP 65 with built-in bypass diodes
Grounding connection	Yes
Specifications	IEC 61215 and Class II by TÜV certificate

5th Ed.: 12/2000



BACK VIEW



SECTION



