

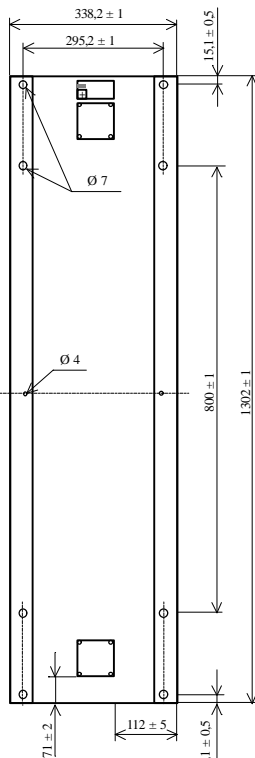


# I-50

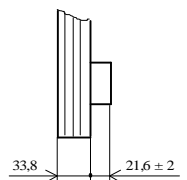
## Photovoltaic module

<b>CHARACTERISTICS</b>	
<b>PHYSICAL</b>	
Length	1302 mm
Width	338 mm
Thickness	33,8 mm
Weight	5,7 kg
Number of cells in series	36
Number of cells in parallel	1
NOCT (800 W/m <sup>2</sup> , 20 °C, AM 1.5, 1m/s)	47 °C
<b>ELECTRICAL (1000 W/m<sup>2</sup>, 25 °C cell, AM 1.5)</b>	
Nominal voltage (V <sub>n</sub> )	12 V
Maximum power (P <sub>max</sub> )	50 W <sub>p</sub> ± 10 %
Short-circuit current (I <sub>sc</sub> )	3,27 A
Open circuit voltage (V <sub>oc</sub> )	21,6 V
Maximum power current (I <sub>max</sub> )	2,87 A
Maximum power voltage (V <sub>max</sub> )	17,4 V
<b>CONSTRUCTIVE</b>	
Cells	Single-crystal Si, textured and antireflectivity layered
Contacts	Redundant contacts on each cell for circuit reliability
Laminate	EVA (ethylene vinyl acetate)
Front face	Tempered glass with improved light transmission
Back face	Tough multi-layered backsheet Tedlar
Frame	Anodised aluminium
Connection boxes	2 x IP 65 with built-in bypass diodes
Grounding connection	Yes
Specifications	IEC 61215 and Class II by TÜV certificate

5<sup>th</sup> Ed. 12.2000



**BACK VIEW**



**SECTION**

